



What's Great in FME 2013



FME 2013: Explore the Next Frontier of Data Interoperability

FME 2013 provides new and enhanced formats and transformers to help you boldly take your data where it hasn't gone before.

Quickly Accomplish Data Missions

Rev up performance and produce data that can be used more efficiently.

- Automatically read and write zipped files and read zipped files directly from the web
- Experience speedier raster writing
- Create Esri® Shape datasets with a spatial index that load more easily into ArcGIS®
- Rapidly load data into Microsoft SQL Server® 2012 and SQL Azure

Take New and Revamped Tools on Your Data Transformation Voyages

Gain more control over the usability, accuracy and appearance of output data with the next level of transformation capabilities, including:

- GeometryValidator - identify and repair 2D and 3D geometry issues
- ShortestPathFinder - use one network for calculations on several paths
- Joiner - revised so that parameters are set in a single dialogue
- HTTPMultipartUploader - submit data to a website as a multi-part stream
- MapTextLabeller* - generate beautiful cartographic labels
- Reprojector enhancements - CSMMapReprojector and CSMMapAttributeReprojector allow more control over coordinate conversion
- BlueMarbleReprojector* - access Blue Marble's highly accurate coordinate reprojection engine
- JSON tools - quickly transform data into the JSON standard

Launch New Software Versions Effortlessly

Upgrade confidently with support for the newly released versions of key applications, such as:

- Autodesk® AutoCAD® 2013
- Esri ArcGIS 10.1
- Ingres 10S
- Microsoft SQL Server 2012
- PostGIS 2.0, including new support for PostGIS Raster
- Teradata® 14.0



Encounter New Data Formats

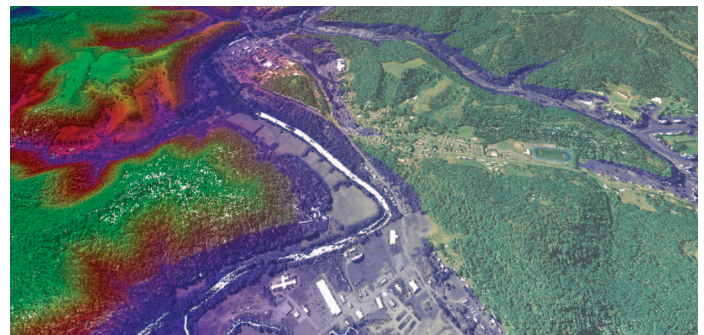
FME 2013 supports over 300 formats, with the addition of 28 new point cloud, 3D, raster, database, vector, and XML formats.

View a complete list of new formats at www.safe.com/fme2013

Easily Navigate Point Cloud Data

Consume these massive datasets and extract only required information, with new tools such as:

- PointCloudExpressionEvaluator - carry out calculations on various components of point cloud datasets such as colour and intensity
- PointCloudFilter - filter points based on other components and extract only relevant information
- Support for 6 additional point cloud formats including ASTM E57



A point cloud dataset of a valley before (right half) and after (left half) transformation by FME's PointCloudExpressionEvaluator.

Make 3D Data Discoveries

Produce more realistic models for visualization in 3D applications with enhancements to 3D capabilities, including:

- SolidBuilder, SurfaceBuilder, and SurfaceOnSurfaceOverlayer - combine various 3D components into one large structure
- VolumeCalculator - calculate the volume of 3D solid geometries
- Support for additional 3D formats including X3D (VRML), Autodesk Infrastructure Modeller, and CityGML 2.0 plus ADE Extensions

Cover New Non-Spatial Territory

Use non-spatial data in more ways than you thought possible. FME 2013 supports additional non-spatial formats including Salesforce®, Socrata, and CouchDB.

- Combine two or more disparate non-spatial datasets easily for detailed analysis
- Validate non-spatial data to ensure consistent formatting
- Integrate non-spatial and spatial data for use in mapping applications

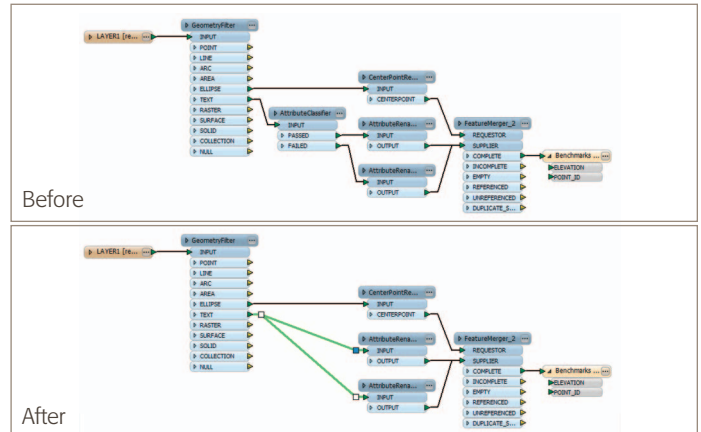
*- Available at an additional cost as an add-on.

What's Great in FME Desktop 2013

Configure Workflows More Efficiently in FME Mission Control

Navigate workflows more easily with FME Workbench's usability enhancements. Enhanced features include:

- Smart-Delete Mode - saves you mouse clicks and time as it automatically repairs connections between transformers when one is deleted
- Improved zoom control - provides you with finer grained control over workspace zoom levels and introduces a new "zoom to extents" button
- New shortcuts allow you to instantly execute common functions directly from your keyboard
- Faster display of results in the log window



An FME workflow before and after transformer deletion using the Smart-Delete function.

What's Great in FME Server 2013

Free Up Your Time with Enhanced Automation that is More Easily Configured

Set up automated workflows more easily with FME Server 2013 usability enhancements:

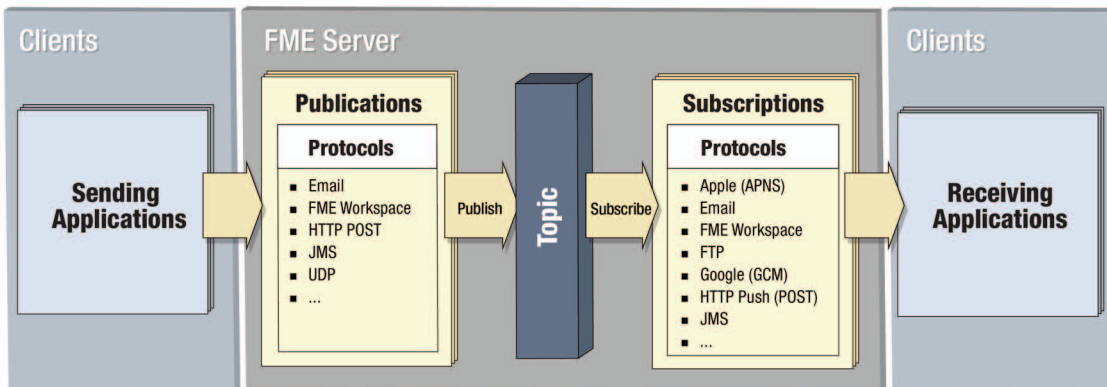
- Simplified configuration and access of FME Server functions through a single unified platform web console designed for use by both end-users and administrators
- Schedule tasks more effortlessly with easier navigation of FME Server's scheduler interface
- Integrate workflows from FME Desktop and with third-party applications quickly and more seamlessly

Introducing the FME Server Notification Service

Take data from anywhere and deliver it to anyone exactly when it's needed with this recent addition to FME Server's capabilities.

Key Capabilities of the FME Server Notification Service:

- Receive, respond to, and deliver data in real-time using common protocols like email or HTTP
- Accept and process sensor data
- Use complex event processing to evaluate incoming data against business rules and make instant, intelligent decisions
- Send data to and from mobile devices via protocols like Apple Push and Google Messaging



FME Server Notification Service flow diagram depicting the architecture of how reporters and subscribers send and receive notifications through various protocols and FME Server.

