

Safe  
Software

# The FME: Winner's Circle

**Success stories** from organizations  
like yours that trust FME.

 Local Government: Volume 2

# Table of Contents

- 2 Real Change Is Just a Platform Away
- 4 Empowering Local Governments with FME
- 6 Benefiting From a Data Integration Platform That Has Strong Spatial Capabilities
- 7 How Using FME Provides Value
- 8 Customer Stories
  - 9 City of Naperville
  - 10 Warwickshire County Council
  - 11 City of Coquitlam
  - 12 City of Oshkosh
  - 13 San Bernardino County
  - 14 Waterford City & County Council
- 15 The Value of FME for Local Governments
- 16 About Safe Software





# Real change is just a platform away.

FME is ready to put your data to work and transform your organization today.

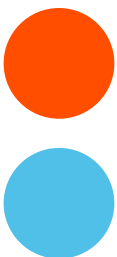




# Empowering Local Governments with FME

Local governments face complex operations, managing diverse data across departments to enhance community life and meet various mandates. FME streamlines these processes through data integration, enabling efficient, reliable, and modern services. It offers seamless integration across systems like asset management, GIS, and more, optimizing workflows such as digital plan submissions and enhancing services like Next Generation 9-1-1. Furthermore, FME aids in creating open data portals for improved citizen engagement, demonstrating its essential role in modernizing municipal services.

Explore [success stories](#) from local governments using FME.

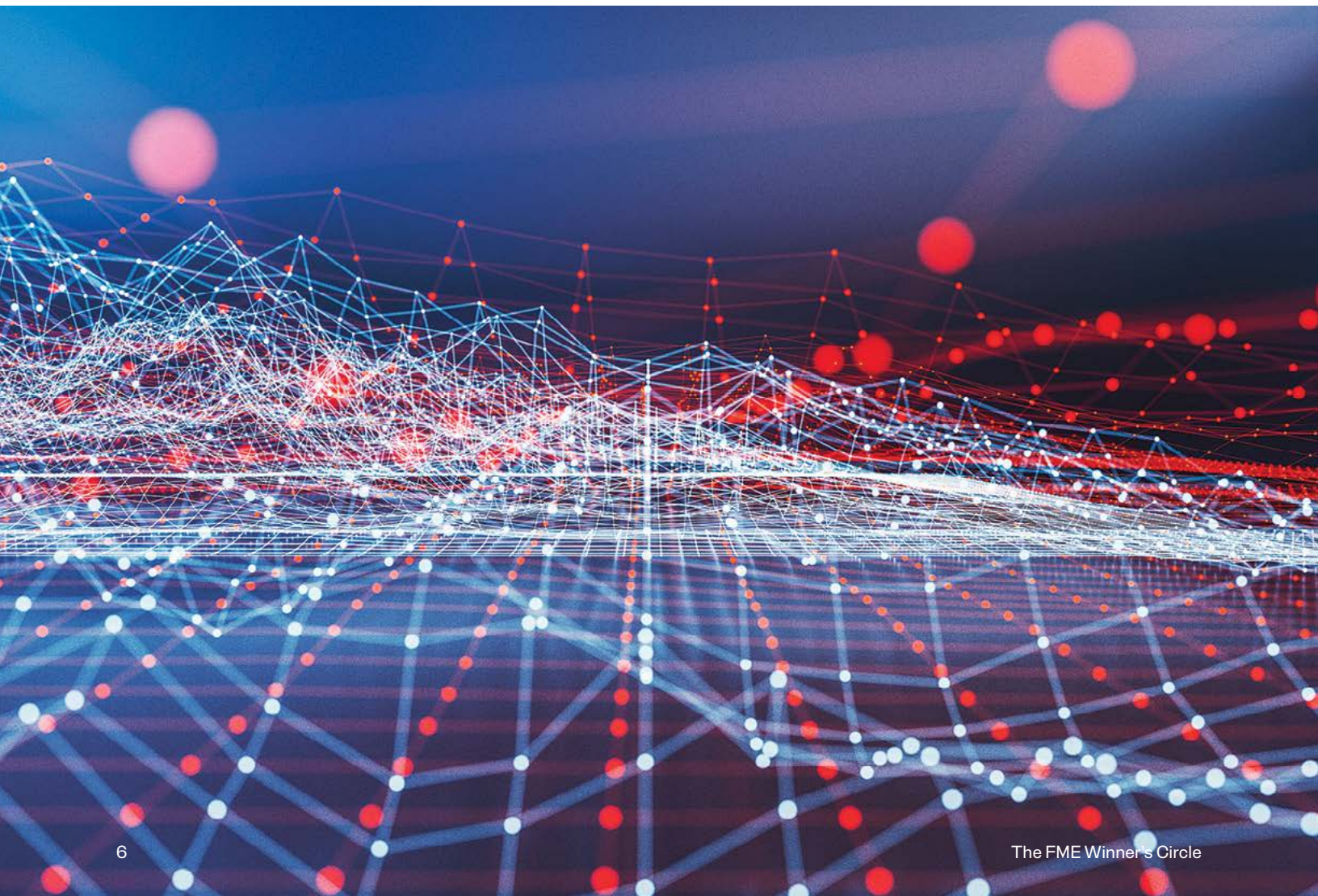


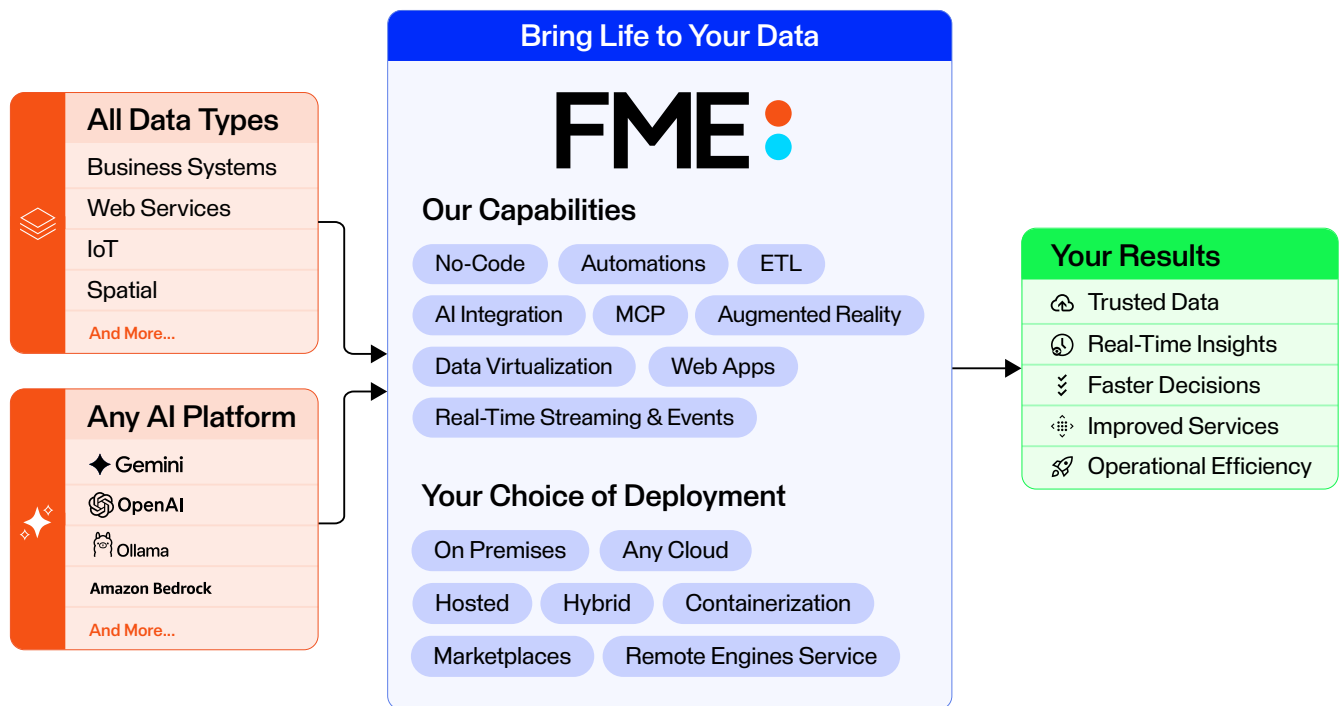


# Benefiting from a Data Integration Platform that has strong spatial data capabilities.

- **Spatial Data's Universal Impact:** Spatial data bridges digital and real-world experiences, influencing everything from emergency services to everyday conveniences, like finding a coffee shop.
- **From Optimization to Transformation:** While often underutilized in decision-making, spatial data acts not just as a component but as the catalyst for transitioning from digital optimization to true digital transformation, revealing new relationships and insights.
- **Competitive Advantage with Spatial Insights:** Utilizing spatial data delivers smarter decision-making, uncovers market opportunities, and enables efficient resource allocation. Spatial data sets organizations ahead of competitors who overlook its value.

The FME Platform has built-in support for thousands of systems as well as 800+ out-of-the-box transformers allowing users to build and automate custom integration workflows without having to code. Whether your data challenges have to do with spatial data, big data, stream processing, distributed processing, parallel processing, cloud migration, or business intelligence, FME is here to help you spend more time using data, and less time fighting it.





## How using FME provides value.

### Data in All Its Forms

From real-time events and streams, spatial, application, database, 3D, AR and more. You name it, FME supports it.

### Goes Anywhere Your Data Goes

The best place for your integration technology is close to your data. Whether it's on-premises, hybrid, or multi-cloud—there's a fit to deploy one or all together.

### No-Code. A New Level of Productivity.

Low code is still code. With FME's no-code environment you can build workflows, web applications and full blown automations without ever writing a line of code!

### Enterprise Automation

Save time and resources by connecting applications across your organization and automating manual tasks.

### Unrivaled System Support

From ETL to Zero ETL, to live connections with thousands of systems and more added all the time. Get your data to where it needs to be for a complete view of your enterprise.

### Pricing That Makes Sense

You get it all: every connection, every component, every capability, and as many users as you want—all included with no extra fees.

# Customer Stories

City of Naperville

Warwickshire County Council

City of Coquitlam

City of Oshkosh

San Bernardino County

Waterford City & County Council






# City of Naperville

## The City of Naperville integrates FME with Cityworks to automate service requests and work orders

The City of Naperville integrated FME with Cityworks to automate service requests, streamline processes, and eliminate hours of manual data entry across departments. In just one year, they significantly improved workflows, enhanced collaboration, and saved time and resources, allowing their teams to focus on high-value tasks and improve citizen engagement.

- **Main Use Cases:** Automate service requests and work orders, and integrate FME with Cityworks.
- **Goal:** Streamline processes to increase efficiency and eliminate data silos.
- **Pain Point:** Operations were tedious and diverted attention from high-value tasks.
- **Scenario Before FME:** Previously, residents would submit service requests by call or email, requiring hands-on attention from staff. Manually processing and responding to requests was highly resource-intensive.
- **Results with FME:** With FME, service requests are submitted online, saving the city hours of work. Naperville's IT department can now implement processes faster, enhancing team collaboration and improving operations.

Read the full story on how the City of Naperville [streamlined time-consuming processes](#).



“With FME, we were suddenly saying “Yes!” to other departments and implementing requests quickly. Now, we’re viewed differently in our interactions. FME makes it easy for us to improve our relationships with other departments by helping improve their business processes.”

Danielle DuBose  
Database Developer, City of Naperville

# Warwickshire County Council



## Monitoring Warwickshire County Council health and social care services with FME

Governing five districts and boroughs in England, Warwickshire County Council needed a streamlined way to measure the effectiveness of their health and social care services. The Council used FME to automate the retrieval of public health data from multiple online sources, allowing analysts to focus on critical tasks and improving decision-making and service effectiveness.

- **Main Use Cases:** Real-time data updates and automation of public health data.
- **Goal:** Improve the retrieval of real-time public health data to analyze the effectiveness of health and social care services.
- **Pain Point:** Data downloads were time-consuming and labor-intensive.
- **Scenario Before FME:** A reliance on manual data retrieval methods caused delays and prevented real-time access to critical health data. As a result, decision-makers had limited access to the most current information, causing bottlenecks and inefficiencies in decision-making processes.
- **Results with FME:** Warwickshire County Council now processes massive datasets with ease, saving hundreds of hours in manual effort. Data is retrieved in real-time, supporting better decision-making and allowing for more accurate assessments of health and social care services.

Discover how [Warwickshire County Council](#) supports health and social care services with FME.

“FME has allowed hundreds of hours of work to be automated.”

Joe Ellerington  
Analyst Programmer, Warwickshire County Council

# City of Coquitlam



## The City of Coquitlam leverages FME to support decision-making with the Community Baseline tool

The City of Coquitlam has leveraged FME for over 20 years to support city initiatives and to transform urban planning and development. Powered by FME, the City's Community Baseline tool collects and visualizes datasets to provide actionable, data-driven insights for land use planning.

- **Main Use Cases:** Data integration, strategic decision-making for urban planning, and interdepartmental collaboration.
- **Goal:** Transform data into actionable insights to facilitate decision-making processes and remain agile amid evolving planning legislation.
- **Pain Point:** Manual processes and data silos hindered the team's ability to make quick, informed decisions.
- **Scenario Before FME:** Processes such as manually reviewing subsections of the city could take up to a week, making large-scale data analysis unsustainable.
- **Results with FME:** The City of Coquitlam can now quickly integrate large datasets, gaining insights into strategic constraints and development opportunities. The Community Baseline tool acts as a critical component in strategic infrastructure planning and resource allocation.

Learn more about how the City of Coquitlam is using FME to [transform city initiatives](#).

“Our directors and senior planners look to us for data to make important and informed decisions, but it has to be accurate, timely and relevant. Without FME, we can't pull that data together, and we wouldn't be able to answer their questions.”

Mike Esovoloff  
GIS & Drafting Manager, City of Coquitlam

# City of Oshkosh



## Real-time solutions: How the City of Oshkosh uses FME to improve search and rescue efforts

Relying on a multi-jurisdictional approach, the City of Oshkosh's Child Abduction Response Team (CART) leverages FME to improve the efficiency of search and rescue efforts. In dealing with time-sensitive situations, FME helps the City of Oshkosh automatically map new information reported by the public. With FME, information is instantly processed and sent to ArcGIS Online, allowing for quicker deployment of targeted search and rescue efforts.

- **Main Use Cases:** Real-time mapping and spatial data processing, multi-jurisdictional data sharing, and automation.
- **Goal:** Provide timely and accurate information vital to search and response efforts, enabling decision-makers to effectively act on events in real-time.
- **Pain Point:** The City of Oshkosh's GIS team was responsible for manually updating mapping information, consuming resources and directing time away from high-value tasks.
- **Scenario Before FME:** Manual mapping updates delayed the deployment of accurate information. Information was often out-of-date when received by search and rescue teams.
- **Results with FME:** Search and rescue efforts have become more efficient, as teams can now focus on targeted areas based on up-to-date spatial data, significantly speeding up response times during critical incidents.

See how the City of Oshkosh enabled **real-time decision making** with FME.

“FME automatically updates spatial data within seconds versus manual updates that were very time consuming. This was the missing component.”

Matthew Lenox  
GIS Administrator, City of Oshkosh



# San Bernardino County

## Elevating probation operations: San Bernardino County launches the Offender Mapping Project

Dedicated to improving departmental functionalities and public service through technology, San Bernardino County redefined their operations with FME. Through the county's Offender Mapping Project, FME enabled dynamic GIS visualization, revolutionizing how Probation Officers manage their routes and responsibilities.

- **Main Use Cases:** No-code integration with Esri ArcGIS, GIS-based map visualizations, interdepartmental collaboration, and data validation.
- **Goal:** Automate data refreshes and comprehensive GIS data visualizations of offender locations to optimize Probation Officer routes and priorities.
- **Pain Point:** Data silos and labor-intensive workflows drained team resources, while inefficient processes increased the risk of errors in data management and reporting.
- **Scenario Before FME:** Static report views of Probation Officer workloads made it difficult to optimize schedules and visits, preventing the team from meeting court-mandated timelines.
- **Results with FME:** The Offender Mapping Project has enabled real-time, automated mapping and visualization of offender data, allowing officers to efficiently plan and prioritize their schedules.

Read more on how San Bernardino County is [enhancing operations](#) with FME.



“The degree of integration with FME and our Esri platform is hugely valuable. FME allows us to do things quicker and more efficiently, accurately, and consistently. It’s great having a product that meshes well with our main Esri GIS platform.”



Brent Rolf  
Business Applications Manager, San Bernardino County




# Waterford City & County Council

## Waterford City & County Council supports environmental conservation with aerial photography and FME

Waterford City & County Council used FME to boost conservation efforts as part of the Bluesky National Tree Mapping Project. By overlaying data and analyzing development zones with FME, the Council established a baseline for tree coverage and identified available land to work toward their target canopy coverage.

- **Main Use Cases:** Aerial mapping, data integration, data visualization, and urban planning.
- **Goal:** Incorporate tree data into zoning development plans to boost conservation efforts and help achieve their target of 20% tree coverage.
- **Pain Point:** Lack of appropriate tools to analyze the surrounding region.
- **Scenario Before FME:** Without FME, the Council would need to conduct physical surveys to understand the canopy coverage within the regions of interest. Given the team's existing resources, assessing the surrounding environment would be unsustainable.
- **Results with FME:** FME has helped Waterford City & County Council make data-driven decisions to work toward their tree coverage target of 20%. The Council now has a streamlined process to overlay and collect data, with FME playing a pivotal role to preserve and protect trees.

Watch how Waterford City & County Council used FME to [analyze aerial photography](#).



“People might think I work in a section of many staff, but in fact, sometimes there are only 1 or 2 of us producing great results. FME has allowed us to do so much more with only a small amount of technical and physical resources.”

Jon Hawkins  
IS Project Leader, Waterford City & County Council



## The Value of FME for Local Governments

FME by Safe Software transforms local government data management, providing tools for actionable insights and public service innovation. Its no-code platform tackles data integration challenges, allowing for the delivery of transparent, community-focused services. Tailored subscription options offer flexibility and unlimited access, ensuring governments can evolve with technology and mandates. This comprehensive approach empowers entire organizations to harness data for a smarter, more connected future.

Learn more about [how FME supports local governments around the world.](#)



## About Safe Software

Safe Software is an all-data integration solution company that helps organizations bring life to their data. With over 30 years of expertise and 25,000+ enterprise customers across 125+ countries, whatever your data challenge is, we can help you.

Safe Software has been recognized in the Gartner Magic Quadrant for Data Integration Tools for 4 consecutive years and in the Gartner Peer Insights 'Voice of the Customer' for Data Integration Tools for 2 consecutive years. In the May 2024 Gartner Peer Insights 'Voice of the Customer' for Data Integration Tools, Safe Software was named a Customers' Choice and was also recognized as North America and Midsize Enterprise Customers' Choice.

Find out more at [fme.safe.com](https://fme.safe.com)

**FME**   
by Safe Software 